



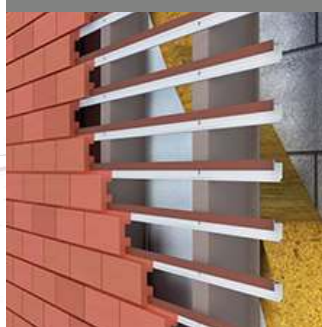
INTELLIGENT
VENTILATED
FACADES

ABOUT US

“Ronson Group” has been working in the market of facade construction for 27 years. During this time, we designed, manufactured and installed more than 3,000,000 m² of ventilated facades and received 17 patents for our inventions. Today, the assortment of supporting facade constructions of “Ronson” allows to mount practically all modern facade cladding materials: gres porcelain stoneware, natural and artificial stone, clinker tiles, facade decor, ceramics, fiber cement and HPL plates, mineral wool panels, terracotta, aluminium composite panels, steel sheets and cassettes.

SUSPENDED VENTILATED FACADE SYSTEMS

CLINKER/DECO STONE



DECORATIVE ELEMENTS



GRES-CONCEALED FIX



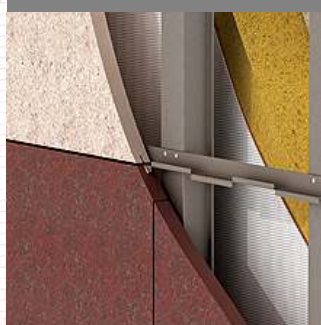
GRES-POINTFIX



GRES-VISIBLE FIX



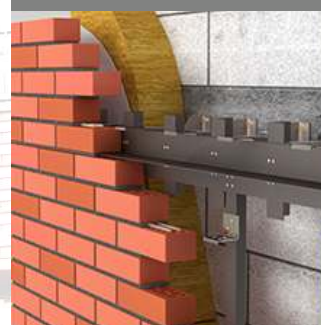
NATURAL STONE



TERRACOTTA



MASONRY



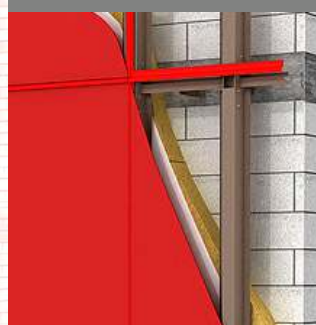
METAL CASSETTES



METAL COMPOSITE



OTHER FLAT PANELS



FIBER CEMENT

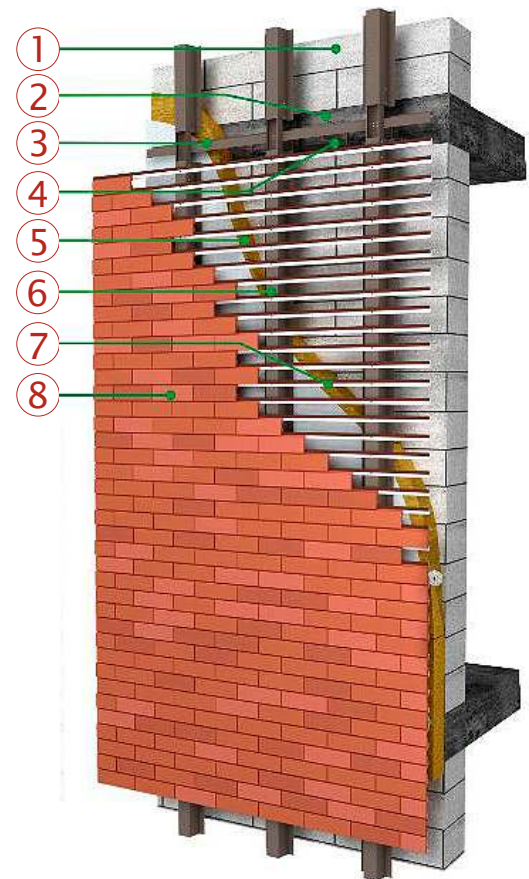




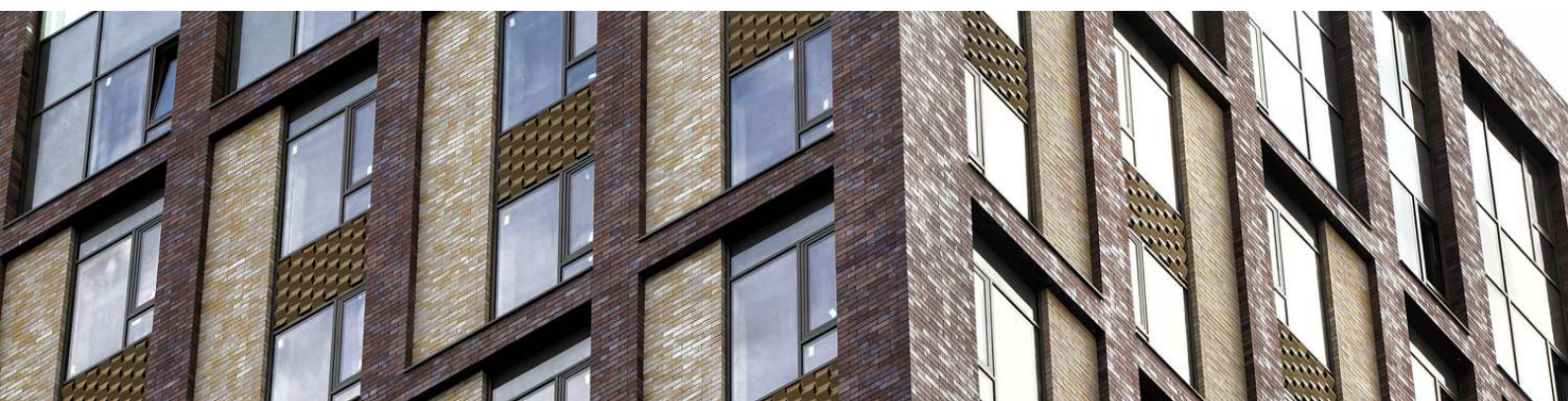
"RONSON 500"– CLINKER AND DECORATIVE STONE

"Ronson 500" – a system of ventilated facades, for attaching ceramic tiles and decorative stones without adhesive and stitch filling.

A fastening system is possible both over the entire surface of the wall, and exclusively into interfloor overlappings.



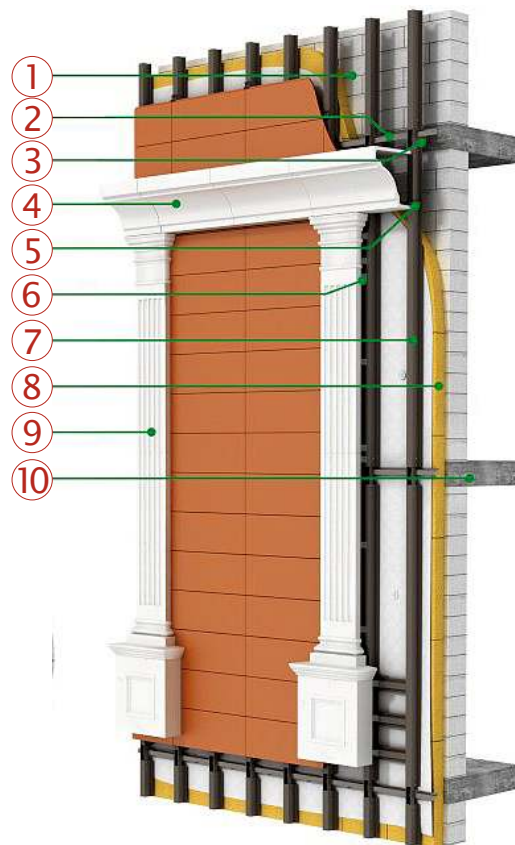
1. Porous concrete
2. Ceiling
3. Horizontal reinforced guide
4. Support bracket
5. Insulation
6. Vertical reinforced guide
7. Clinker profile
8. Clinker tiles





"RONSON 600– DECORATIVE FACADE ELEMENTS

"Ronson 600" – a ventilated facade system for fixing decorative elements.
A fastening system is possible both over the entire surface of the wall, and exclusively into interfloor overlappings.



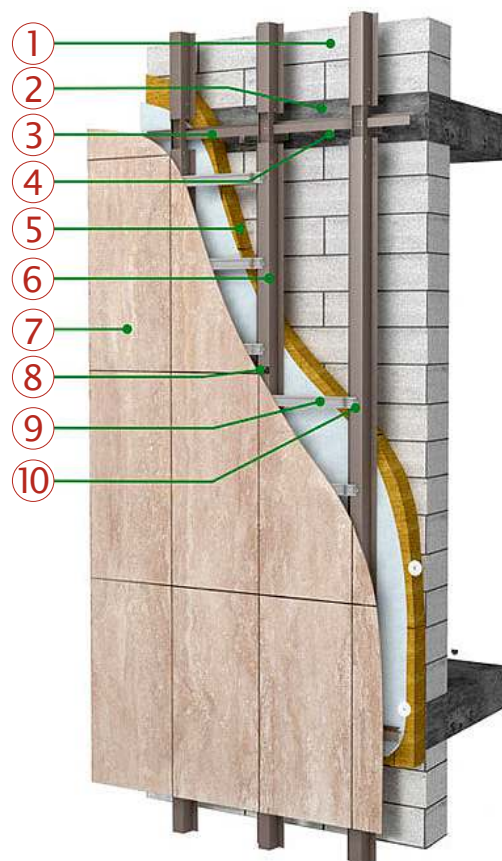
1. Porous concrete
2. Horizontal reinforced guide
3. Support bracket
4. Glass fiber cornice
5. Insert element "RONSON"
6. Vertical reinforced guide
7. Insulation
8. Glass fiber concrete column
9. Ceiling



"RONSON 400"– GRES, CONCEALED FASTENING

"Ronson 400" – a system of ventilated facades, for concealed facing of gres porcelain stoneware tiles.

A fastening system is possible both over the entire surface of the wall, and exclusively into interfloor overlappings.



1. Porous concrete
2. Ceiling
3. Horizontal reinforced guide
4. Support bracket
5. Insulation
6. Vertical reinforced guide
7. Gres porcelain tile or stone
8. Bottom support
9. Gripper
10. Internal holder



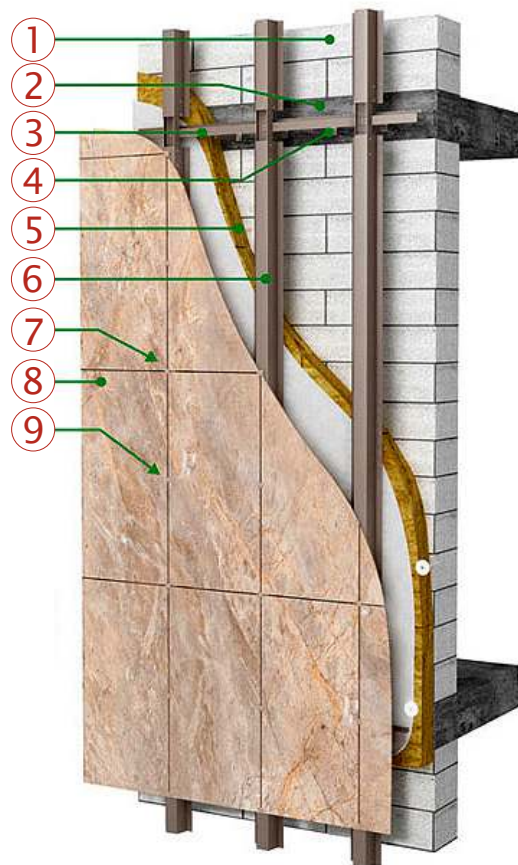
"RONSON 300"– GRES, POINT FASTENING

"Ronson 300" – a system of ventilated facades designed for point fastening of gres porcelain stoneware plates.

A fastening system is possible both over the entire surface of the wall, and exclusively into interfloor overlappings.



1. Porous concrete
2. Ceiling
3. Horizontal reinforced guide
4. Support bracket
5. Insulation
6. Vertical reinforced guide
7. Spot cross bracket
8. Gres porcelain tile
9. Spot intermediate bracket

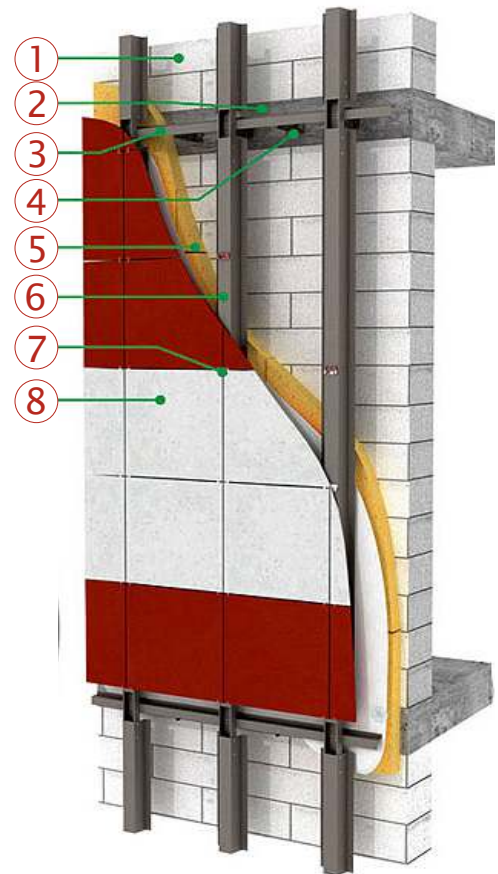




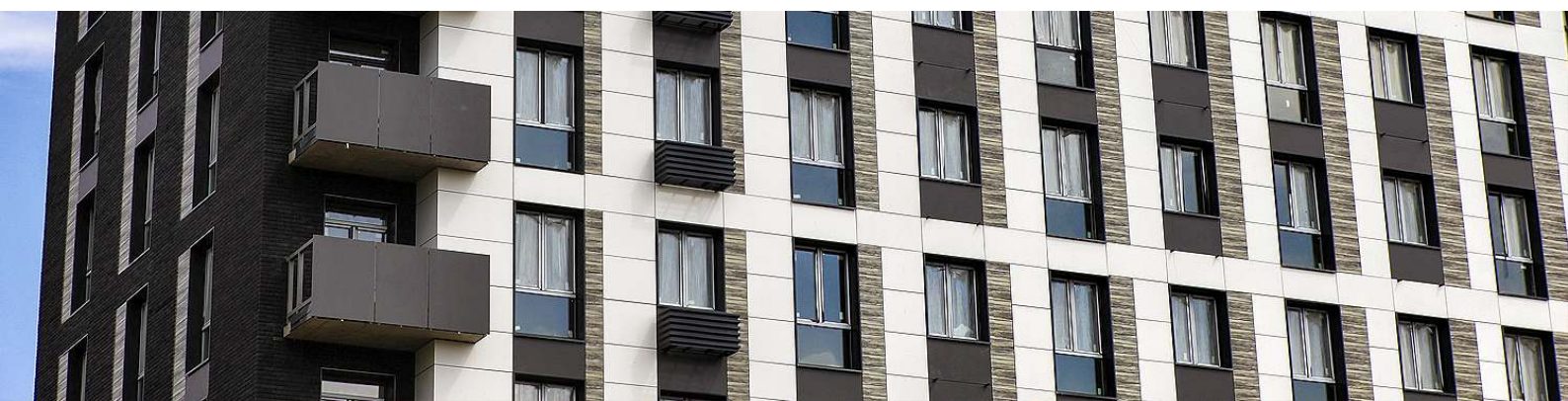
"RONSON 300"– GRES, VISIBLE FASTENING

"Ronson 300" – a system of ventilated facades designed for visible fastening of gres porcelain stoneware plates.

A fastening system is possible both over the entire surface of the wall, and exclusively into interfloor overlappings



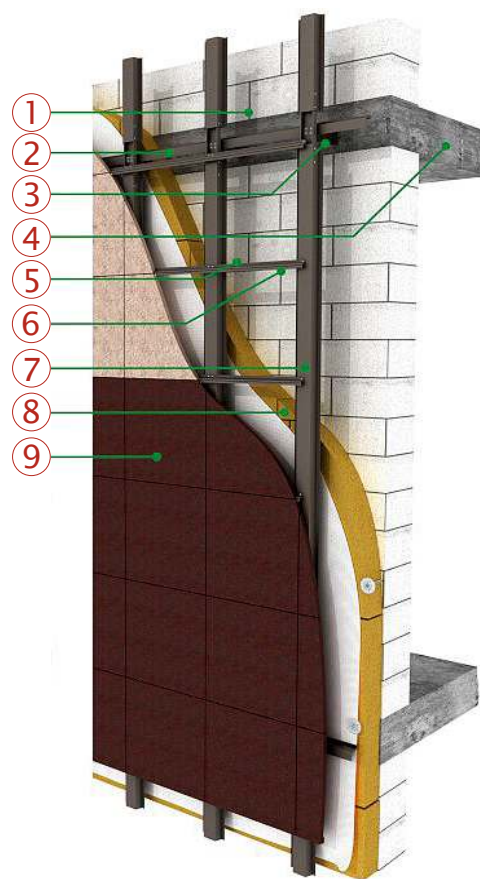
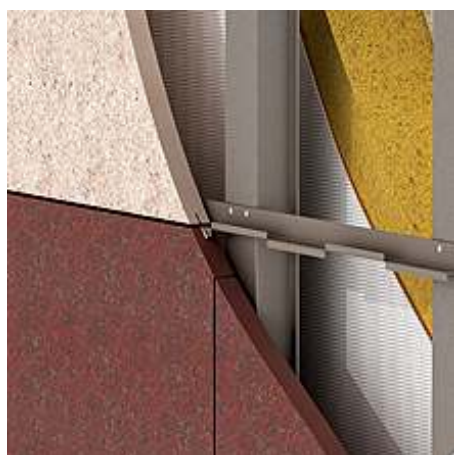
1. Porous concrete
2. Ceiling
3. Horizontal reinforced guide
4. Support bracket
5. Insulation
6. Vertical reinforced guide
7. Composite bracket
8. Gres porcelain tile



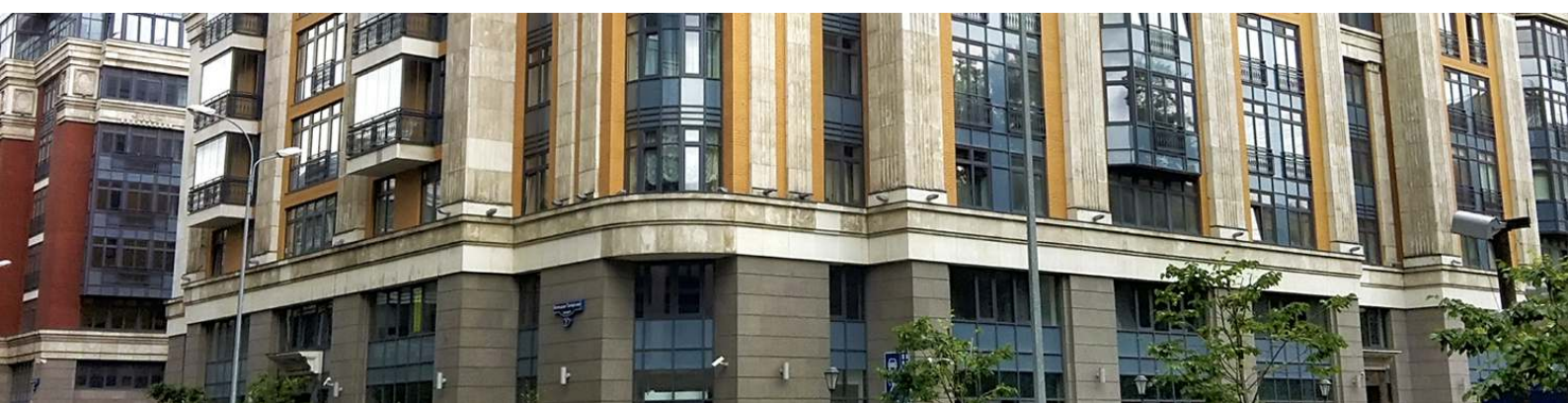
"RONSON 400" – NATURAL STONE

"Ronson 400" – a system of ventilated facades, for concealed facing from natural stone.

A fastening system is possible both over the entire surface of the wall, and exclusively into interfloor overlappings



1. Porous concrete
2. Horizontal reinforced guide
3. Support bracket
4. Ceiling
5. Starting profile
6. Ending profile
7. Vertical reinforced guide
8. Insulation
9. Natural stone panel

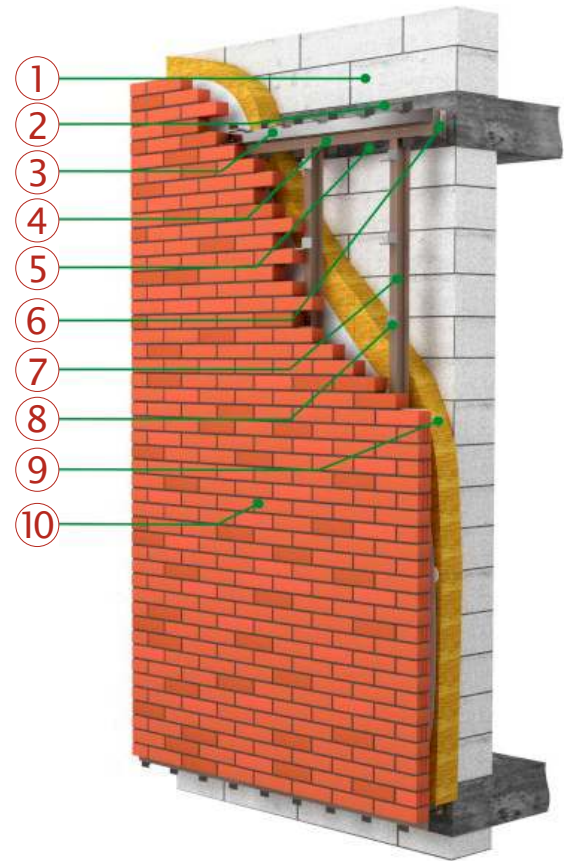




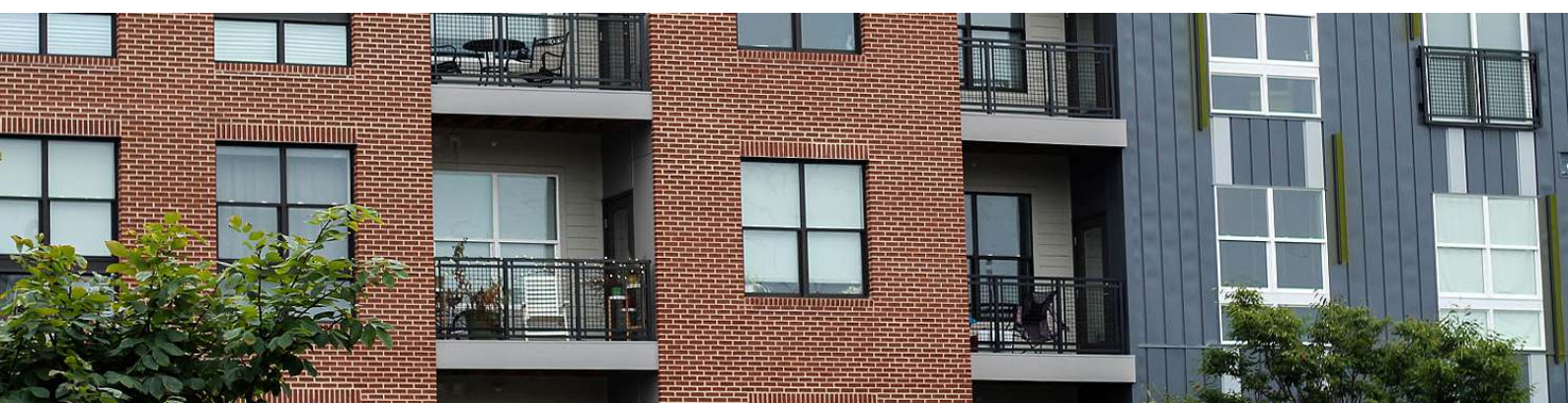
"RONSON 740" – MASONRY ON VENTILATED FACADE

"Ronson 740" – system of suspended ventilated facades, designed for masonry.

A fastening system is possible both over the entire surface of the wall, and exclusively into interfloor overlappings.



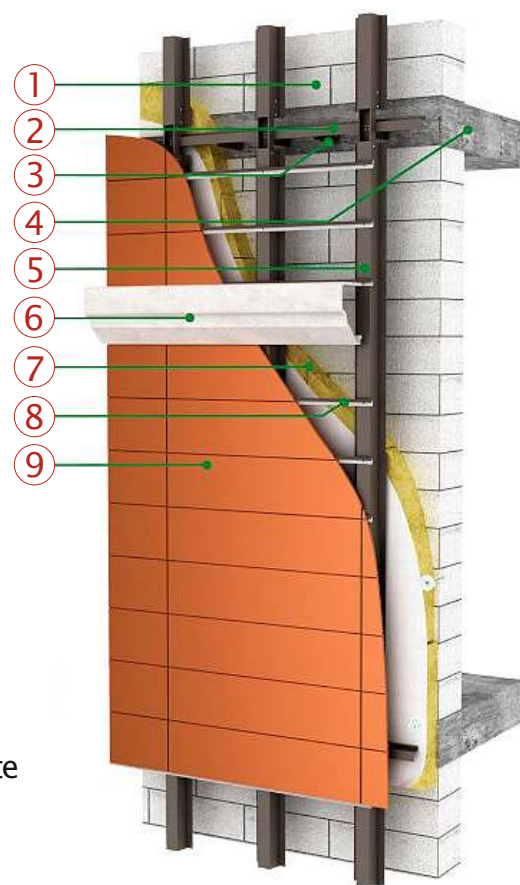
1. Porous concrete
2. Ceiling
3. Angular profile 68 * 80 * 2
4. Angular profile 50 * 50 * 2
5. Adjustment profile
6. Support bracket
7. Vertical reinforced guide Z
8. Insert
9. Insulation
10. Masonry



"RONSON 400" – TERRACOTTA

"Ronson 400" – a system of ventilated facades, for concealed facing from terracotta tiles or plates.

A fastening system is possible both over the entire surface of the wall, and exclusively into interfloor overlappings.



1. Porous concrete
2. Horizontal reinforced guide
3. Support bracket
4. Ceiling
5. Vertical reinforced guide
6. Decorative element from glass fiber concrete
7. Insulation
8. Clinker profile
9. Ceramic plate



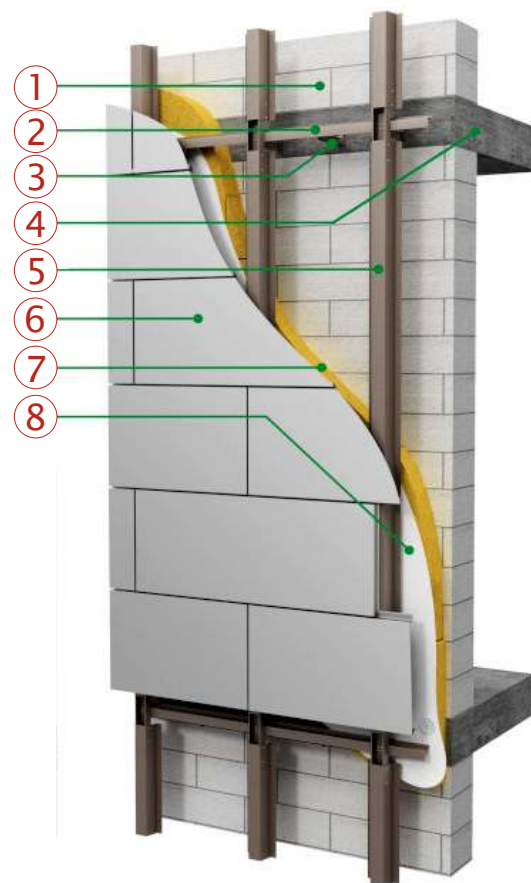


www.ronson-group.eu

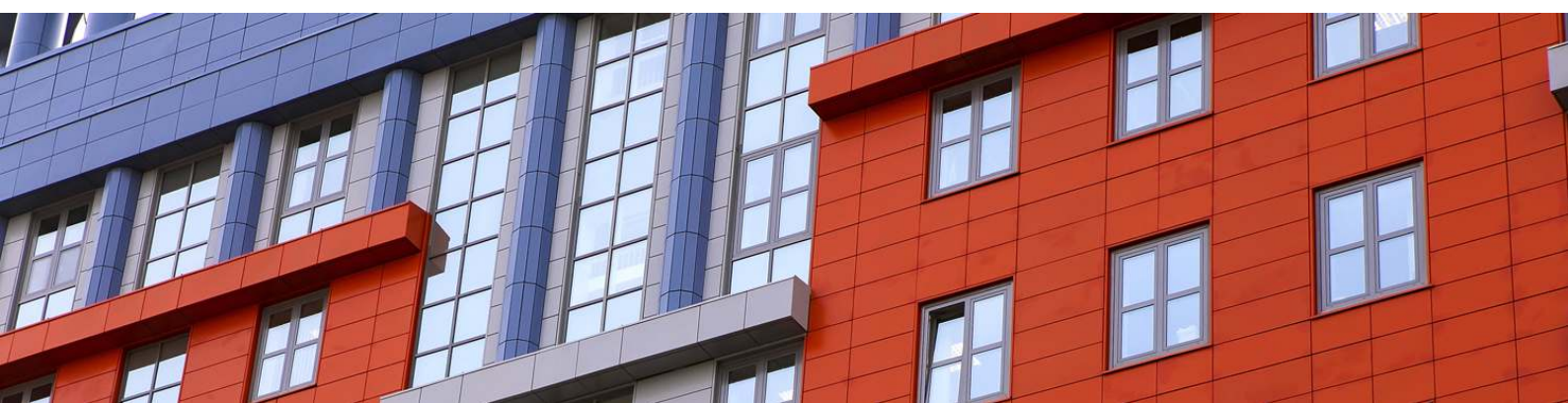
"RONSON 200"– METAL COMPOSITE OR METAL CASSETTES

"Ronson 200" – a system of ventilated facades, designed for mounting cassettes made of composite materials, galvanized or stainless steel and aluminum.

A fastening system is possible both over the entire surface of the wall, and exclusively into interfloor overlappings.



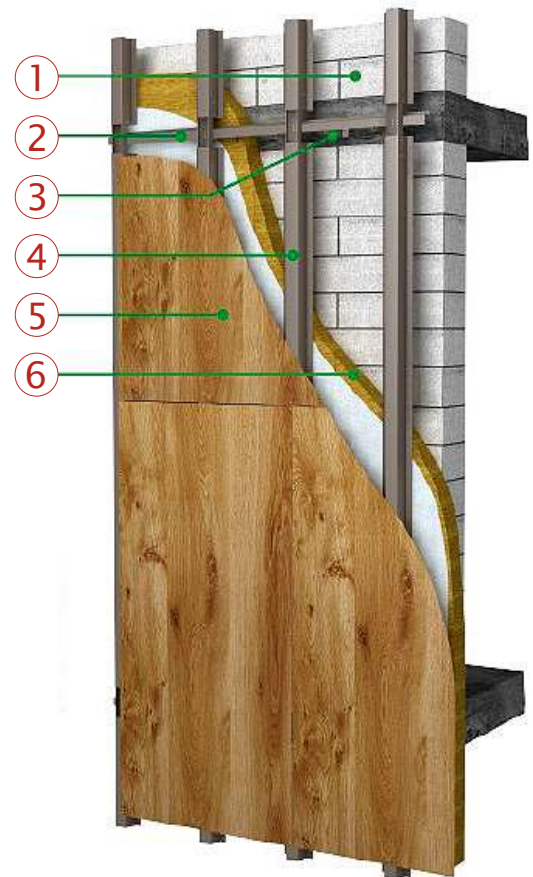
1. Porous concrete
2. Horizontal reinforced guide
3. Support bracket
4. Ceiling
5. Vertical reinforced guide
6. Cassette
7. Insulation
8. Diffusion membrane



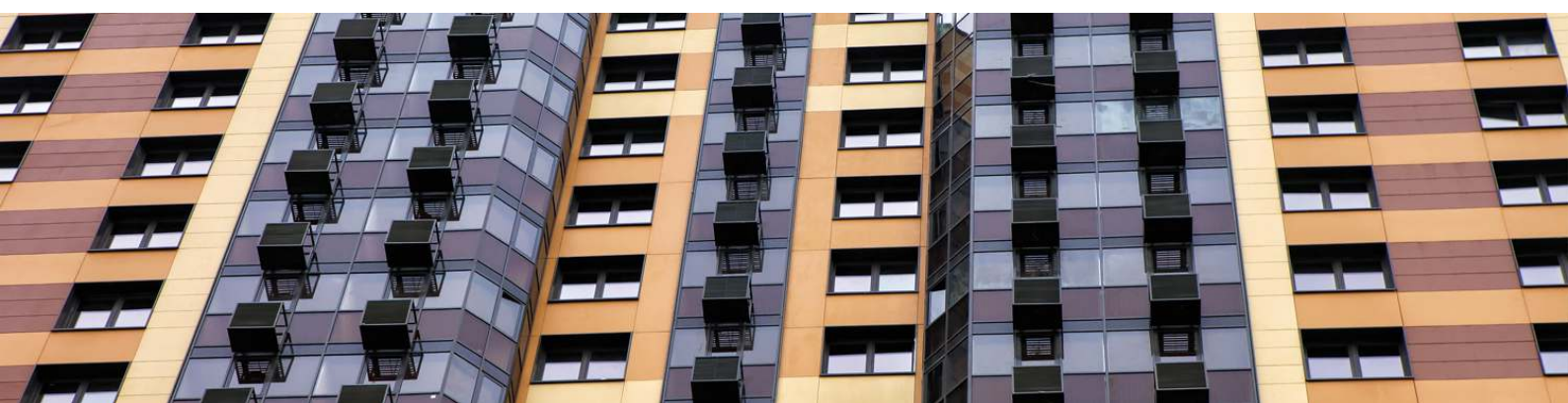
"RONSON 200" – METAL COMPOSITE PANELS

"Ronson 200" – a system of ventilated facades, designed for mounting flat panels made of metal composite.

A fastening system is possible both over the entire surface of the wall, and exclusively into interfloor overlappings.



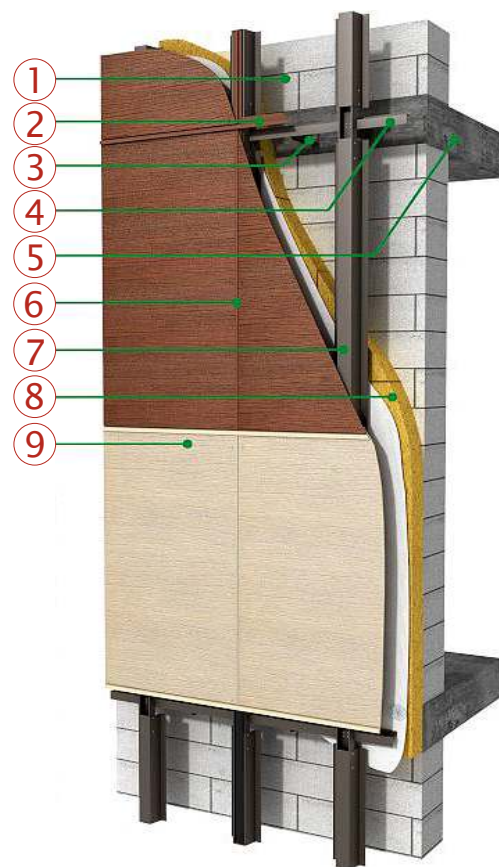
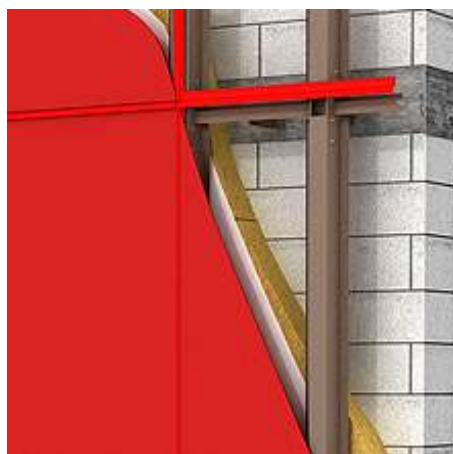
1. Wall
2. Universal guide
3. Support bracket
4. Vertical guide
5. Metal composite panel
6. Insulation



"RONSON 100" – FLAT PANELS

"Ronson 100" – a system of ventilated facades, designed for mounting panel screens of fiber cement, HPL, Rockpanel and others.

A fastening system is possible both over the entire surface of the wall, and exclusively into interfloor overlappings.



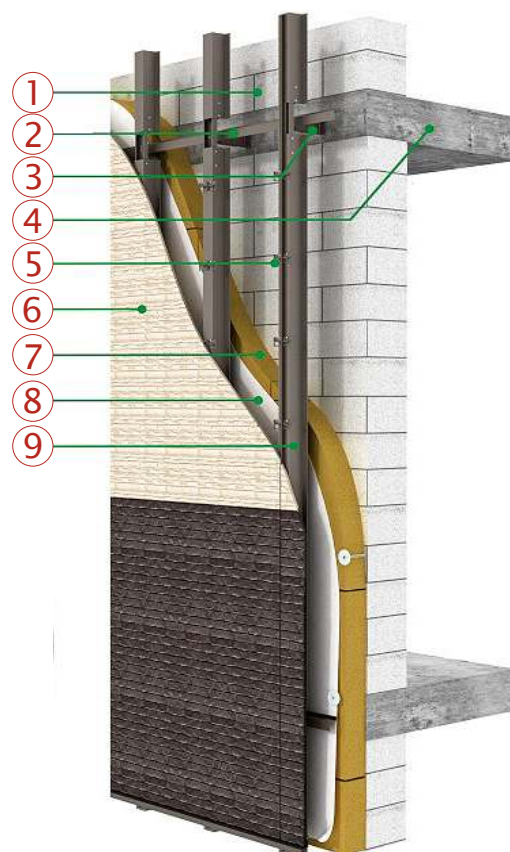
1. Porous concrete
2. Horizontal seam bar
3. Support bracket
4. Horizontal reinforced guide
5. Ceiling
6. Vertical seam bar
7. Vertical reinforced guide
8. Insulation
9. Facing panel



„RONSON 100” – FIBER CEMENT PANELS

"Ronson 100" – a system of ventilated facades, designed for mounting panel screens of fiber cement panels.

A fastening system is possible both over the entire surface of the wall, and exclusively into interfloor overlappings.



1. Porous concrete
2. Horizontal reinforced guide
3. Support bracket
4. Ceiling
5. Bracket
6. Fiber cement panel
7. Insulation
8. Diffusion membrane
9. Vertical reinforced guide

